



BURRI public elements AG creates the cinema of the future with HiCAD

BURRI public elements AG was founded in 1907 and is being managed by the fifth generation. Based in Glattbrugg, Switzerland, the company has over 110 years of experience in the fields of planning, development, project management, construction and production of high-quality, functional products for public and semi-public spaces. Thanks to the ongoing further development of proven systems and self-developed products, BURRI with its Public Elements® provides a wide range of products: from transport engineering with candelabras and masts to lighting solutions for the public domain, signage and traffic guidance systems, waste systems and furniture.

HiCAD convinces through performance

Since 2017, BURRI public elements AG has been relying on the CAD solution SOLIDWORKS as well as on the CAD solution HiCAD by ISD Group. „HiCAD provides great performance and is a very effective tool for steel and metal construction,“ says Bernhard Gasser, head of design, explaining the decision. In order to use

The logo for BURRI public elements is centered within a large white circle. The word "BURRI" is in a large, bold, black serif font, and "public elements" is in a smaller, blue, sans-serif font below it, with a registered trademark symbol (®) to the right.

BURRI
public elements®

REFERENCE REPORT



„Having a good solution is one thing. Using them correctly, efficiently and productively is another. The excellently structured training courses by ISD were exactly the right solution to engage with the extensive spectrum of HiCAD“.

Bernhard Gasser, Head of design, BURRI publicelements AG

the full range of the CAD solution from the very beginning, the Swiss company counted on well-trained employees: „Having a good solution is one thing. Using them correctly, efficiently and productively is another. The excellently structured training courses by ISD were exactly the right solution to engage with the extensive spectrum of HiCAD“, Bernhard Gasser explains.

HiCAD in use

BURRI encounters the same demands in its everyday work as many other businesses: The delivery dates are becoming ever closer, the demand for customer-specific production ever increasing. BURRI tries to get the time back during the planning and supply of material. Hence the suppliers will have to complete ever shortened production cycles.

„HiCAD helps us a lot with the output of DXF and STEP files for sheet metal production,“ explains head of de-

sign Bernhard Gasser. „No more sheet metal processing must be recorded. With the BOM as an Excel file, individually designed records can be created. Between the release of the plan and the start of production remains only very limited time, hence the production plans have to be completed as fast as possible. The ability to derive drawings in HiCAD is a very effective tool for this. I like to output a BOM in Excel at the push of a button, with delivery lists, summarized profile lists, quantity lists, sheet metal lists, glass lists, gratings, total quantities and much more. In addition, this list can be individually modified“.

The key focus of BURRI's construction is on projects in public spaces. The favoured project is modelled in HiCAD and made available to the customer for coordination. Upon release, plans of the production parts with the drawing derivation are created in HiCAD and forwarded to production. In very few cases parametric drawings

Image: © BURRI public elements



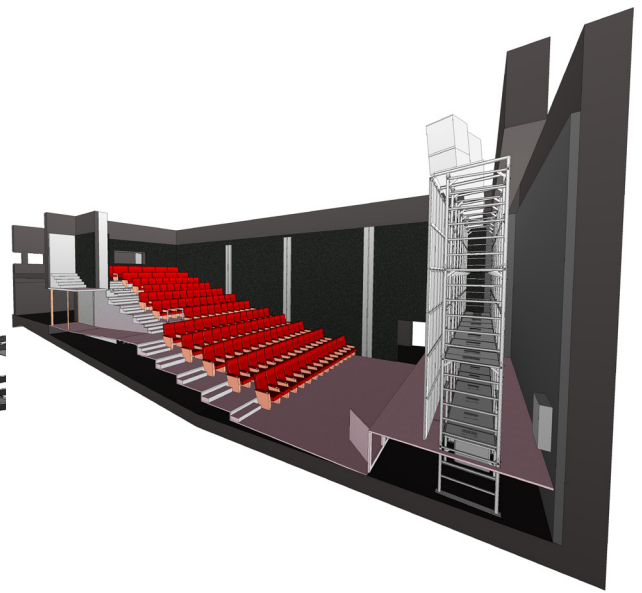
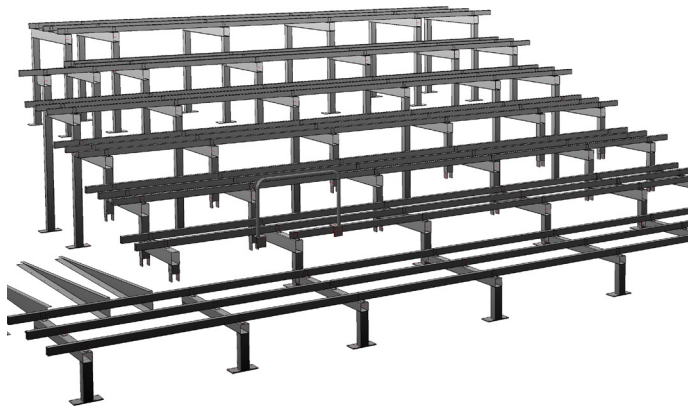


Image: © BURRI public elements

are required, as most projects are created according to customer needs. Nevertheless, BURRI benefits from the flexibility in HiCAD, which is offered to users with both free and parametric drawings. „If standard products are required subsequently, we can still later integrate a parametric logic in order to respond as quickly as possible to dimension changes,“ states Bernhard Gasser, head of design. Also the profile functions in HiCAD with the option to create own profiles are very important for BURRI. „Since we often use our own wooden cross-sections for our benches or draw the installation of electricity cables in detail, we can create cable cross-sections as profiles and thus lay them neatly.“

Cinema of the future

The cinema of the future is one of the first projects BURRI public elements AG has designed with HiCAD. Hall 5 in the Sihlcity Arena, a venture from Swiss businessmen Edi Stöckli and Patrick Tavoli, now boasts the first Cinema LED screen in Europe and the first worldwide to fea-

ture 4K. HiCAD was used to draw up, create and mount the supporting scaffold for the vast screen. The support element is designed to tenth of millimetre accuracy so that the screen could be installed according to the demanding requirements. For maintenance purposes, the service bar made of gratings is used.

An optimized cinema experience does not only require an excellent projection, but also comfortable seats and a pleasant view of the screen. BURRI raised the existing stand with steel tube scaffolding and covered it with wooden panels. Finally, it was covered with a PVC floor coating.

Professional partner

Should questions occur in daily work, BURRI public elements AG got to know the professional and fast answers of the hotline: „The cooperation with the ISD is excellent and also the support always works very efficiently. When questions occur, they are always answered quickly and on time. In the beginning only from Solothurn, today we



„Between the release of the plan and the start of production remains only very limited time, hence the production plans have to be completed as fast as possible. The ability to derive drawings in HiCAD is a very effective tool for this.“

Bernhard Gasser, Head of design, BURRI publicelements AG

additionally rely on the know-how of the headquarters in Dortmund“, Bernhard Gasser comments on the cooperation with the ISD Group.

Company profile:

- > BURRI public elements AG
- > Industry: Steel/Metal Engineering
- > Software: Solidworks, HiCAD
- > Services: Transport engineering, Outdoor and traffic lighting, Signage and traffic guidance systems, waste systems, Furniture
- > www.burri.world/de

Image: © BURRI public elements



Success needs a strong partner

Check out our portfolio of software solutions. We will be delighted to demonstrate the advantages offered by our products in a personalized presentation or a free one-to-one consultation. Don't hesitate to contact us – we'll be pleased to help you.

ISD Software und Systeme GmbH

Tel.: +49-(0)231-9793-0

Mail: info@isdgroup.de

Web: www.isdgroup.com

